

# Marin County Weekly Wages

Focus on Post-Recession Recovery

## Q3 –2024 Update

Produced by

Marin Economic Consulting


March 7, 2025

Jon Haveman, Principal

415-336-5705 or [Jon@MarinEconomicConsulting.com](mailto:Jon@MarinEconomicConsulting.com)

## Contents

1. Overview of Wage Changes Since the Onset of the Great Recession	2
2. Weekly Wages Over Time	3
3. Graphical Display of Weekly Wage Evolution by Industry (Super Sector)	4
4. Descriptions and References	9



# 1. Overview of Wage Changes Since the Onset of the Great Recession

Figure 1 - 1: Average Weekly Wages

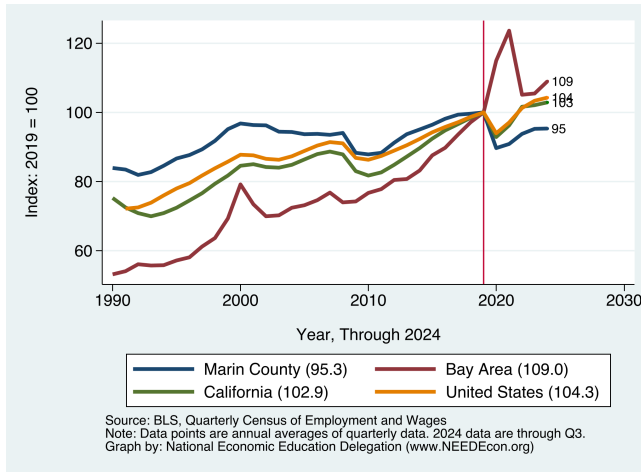
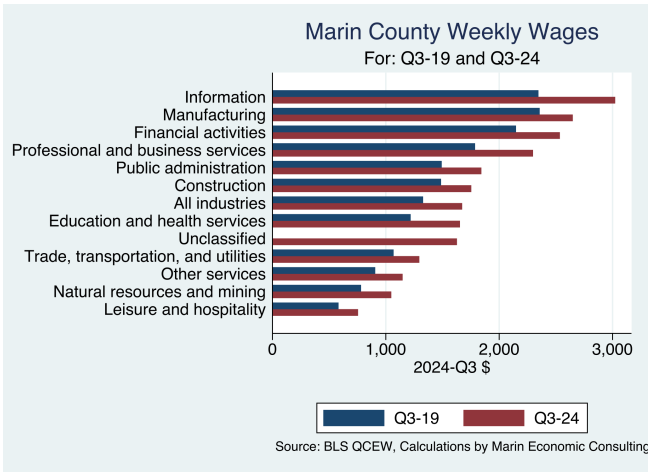


Figure 1 - 2: Wage Growth Since the Recession



**Table 1.1: Quarterly Summary for Q3 – 2024**

Sector	Levels in Q3 – 2024				Change vs Q3 in 2007			
	Employment	Wages	Relative to:		Employment	Wages	Relative to:	
			Bay	U.S.			Bay	U.S.
Information	3,012	3,023.5	0.6	1.0	1,148	1,768.48	–0.10	0.06
Manufacturing	4,099	2,650.0	1.2	1.7	2,031	1,828.00	0.57	0.93
Financial activities	4,988	2,536.0	1.1	1.2	–1,902	952.00	–0.11	–0.04
Professional and business services	17,253	2,298.6	1.0	1.2	–1,768	874.75	–0.17	–0.06
Public administration	6,492	1,842.1	0.9	1.1	156	587.31	–0.12	–0.10
Construction	7,823	1,754.1	1.0	1.2	1,888	607.10	–0.06	–0.05
Education and health services	27,197	1,654.7	1.2	1.3	6,870	653.18	0.18	0.12
Unclassified	77	1,628.0	1.2	1.2	–191	626.00	0.19	–0.04
Trade, transportation, and utilities	17,947	1,295.1	1.0	1.1	–686	457.16	–0.04	–0.01
Other services	6,348	1,148.0	1.1	1.1	46	473.00	–0.23	–0.04
Natural resources and mining	413	1,048.1	1.1	0.8	–243	279.14	–0.17	–0.07
Leisure and hospitality	15,225	755.6	1.0	1.2	2,223	276.83	–0.09	–0.08
<b>Total</b>	<b>110,875</b>	<b>1,674.0</b>	<b>1.0</b>	<b>1.2</b>	<b>9,107</b>	<b>647.00</b>	<b>–0.06</b>	<b>0.02</b>

Source: BLS, QCEW; Calculations by Marin Economic Consulting

## 2. Weekly Wages Over Time

**Table2.1: Summary of Weekly Wages versus the Bay Area as A Whole**

Sector	Q3 –2024		Relative Wages: Q3 of Each Year					
	Employment	Wages	1990	1995	2001	2004	2007	2024
Information	3,012	3,023.5	0.86	0.91	0.86	0.75	0.60	0.38
Manufacturing	4,099	2,650.0	0.67	0.68	0.65	0.56	0.40	0.73
Financial activities	4,988	2,536.0	1.09	1.00	1.02	1.10	0.88	0.74
Professional and business services	17,253	2,298.6	0.99	0.92	0.84	0.95	1.00	0.62
Public administration	6,492	1,842.1	0.98	0.94	0.82	0.78	0.86	0.77
Construction	7,823	1,754.1	0.92	0.89	0.84	0.90	0.94	0.82
All industries	110,875	1,674.0	0.89	0.85	0.82	0.86	0.83	0.64
Education and health services	27,197	1,654.7	0.89	0.88	0.89	0.92	0.94	1.00
Unclassified	77	1,628.0			0.99	1.65	1.02	1.06
Trade, transportation, and utilities	17,947	1,295.1	0.89	0.87	0.83	0.85	0.84	0.75
Other services	6,348	1,148.0	1.08	1.10	1.04	1.09	1.08	0.93
Natural resources and mining	413	1,048.1	0.66	0.81	0.73	0.99	0.78	0.94
Leisure and hospitality	15,225	755.6	1.20	1.04	0.98	0.94	0.93	0.91

Source: BLS, QCEW; Calculations by Marin Economic Consulting

**Table2.2: Summary of Weekly Wages versus California as A Whole**

Sector	Q3 –2024		Relative Wages: Q3 of Each Year					
	Employment	Wages	1990	1995	2001	2004	2007	2024
Information	3,012	3,023.5	0.86	1.01	1.07	0.99	0.85	0.59
Manufacturing	4,099	2,650.0	0.84	0.94	0.95	0.84	0.65	1.20
Financial activities	4,988	2,536.0	1.18	1.15	1.26	1.32	1.12	1.06
Professional and business services	17,253	2,298.6	1.10	1.14	1.16	1.31	1.39	0.98
Public administration	6,492	1,842.1	1.03	1.00	0.91	0.85	0.96	0.89
Construction	7,823	1,754.1	1.05	1.03	1.06	1.07	1.11	1.03
All industries	110,875	1,674.0	1.01	1.03	1.07	1.10	1.09	0.99
Education and health services	27,197	1,654.7	0.90	0.95	1.01	1.06	1.07	1.21
Unclassified	77	1,628.0			1.31	1.66	0.94	1.19
Trade, transportation, and utilities	17,947	1,295.1	0.99	0.97	0.98	0.98	0.99	0.96
Other services	6,348	1,148.0	1.14	1.22	1.26	1.30	1.26	1.10
Natural resources and mining	413	1,048.1	0.94	1.15	1.19	1.27	1.00	1.14
Leisure and hospitality	15,225	755.6	1.21	1.07	1.05	0.97	0.98	0.97

Source: BLS, QCEW; Calculations by Marin Economic Consulting

**Table2.3: Summary of Weekly Wages versus the United States as A Whole**

Sector	Q3 –2024		Relative Wages: Q3 of Each Year					
	Employment	Wages	1990	1995	2001	2004	2007	2024
Information	3,012	3,023.5	1.00	1.13	1.37	1.28	1.09	0.97
Manufacturing	4,099	2,650.0	0.95	1.07	1.12	0.99	0.81	1.70
Financial activities	4,988	2,536.0	1.28	1.25	1.44	1.55	1.28	1.24
Professional and business services	17,253	2,298.6	1.15	1.26	1.31	1.46	1.55	1.24
Public administration	6,492	1,842.1	1.27	1.24	1.15	1.07	1.22	1.12
Construction	7,823	1,754.1	1.18	1.16	1.18	1.16	1.23	1.16
All industries	110,875	1,674.0	1.11	1.13	1.21	1.24	1.25	1.20
Education and health services	27,197	1,654.7	0.97	1.00	1.10	1.16	1.21	1.31
Unclassified	77	1,628.0			1.16	1.60	1.05	1.15
Trade, transportation, and utilities	17,947	1,295.1	1.13	1.10	1.10	1.10	1.11	1.10
Other services	6,348	1,148.0	1.21	1.22	1.24	1.24	1.17	1.15
Natural resources and mining	413	1,048.1	0.65	0.77	0.81	0.88	0.67	0.80
Leisure and hospitality	15,225	755.6	1.45	1.19	1.22	1.20	1.19	1.19

Source: BLS, QCEW; Calculations by Marin Economic Consulting

### 3. Graphical Display of Weekly Wage Evolution by Industry (Super Sector)

Graphs are for the top 10 NAICS 2-digit industries and present only Q3 data for each year.

Figure 3 - 1: 1022: Information

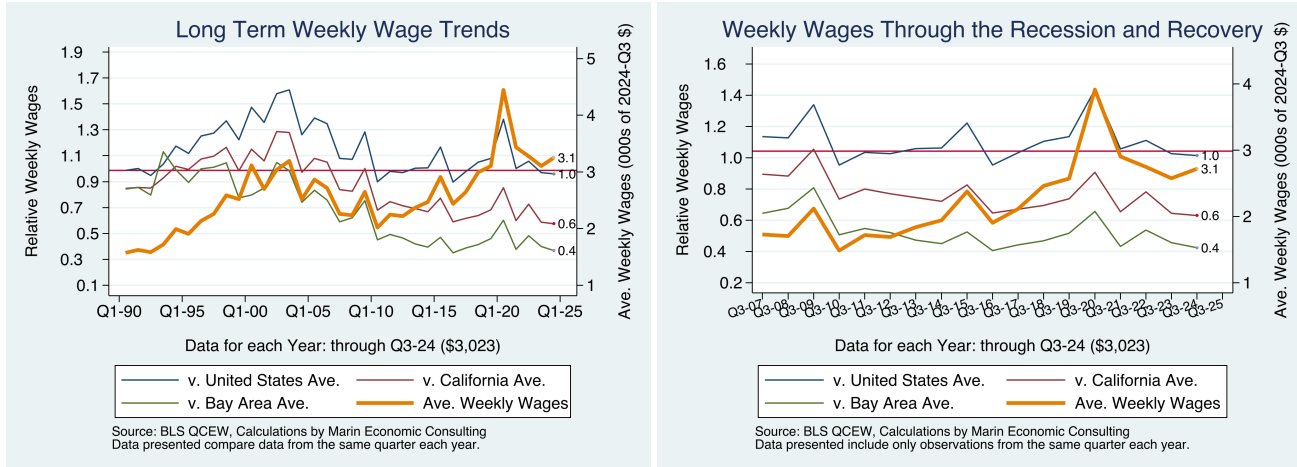


Figure 3 - 2: 1022: Information

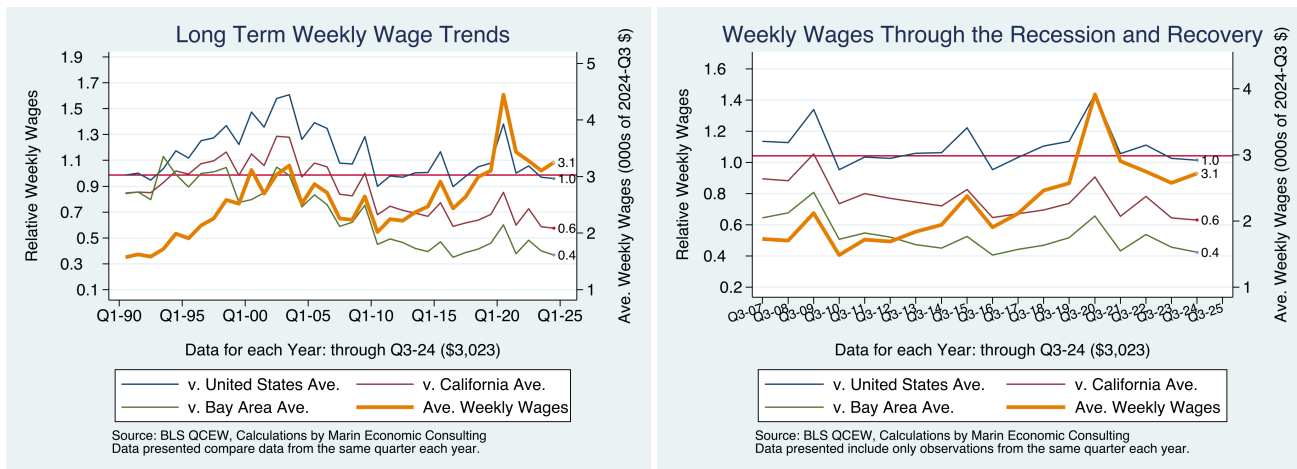


Figure 3 - 3: 1013: Manufacturing

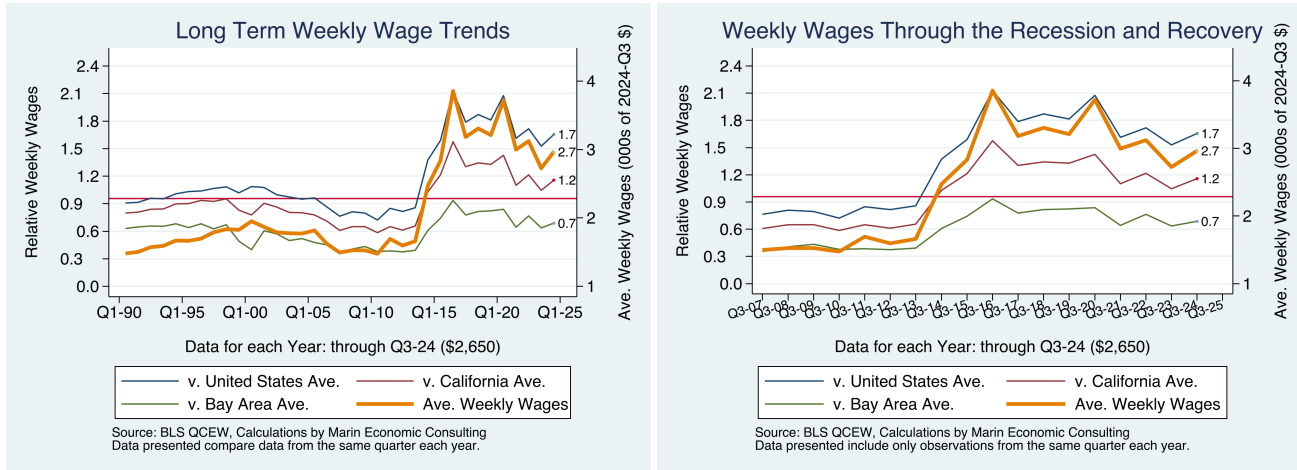


Figure 3 - 4: 1013: Manufacturing

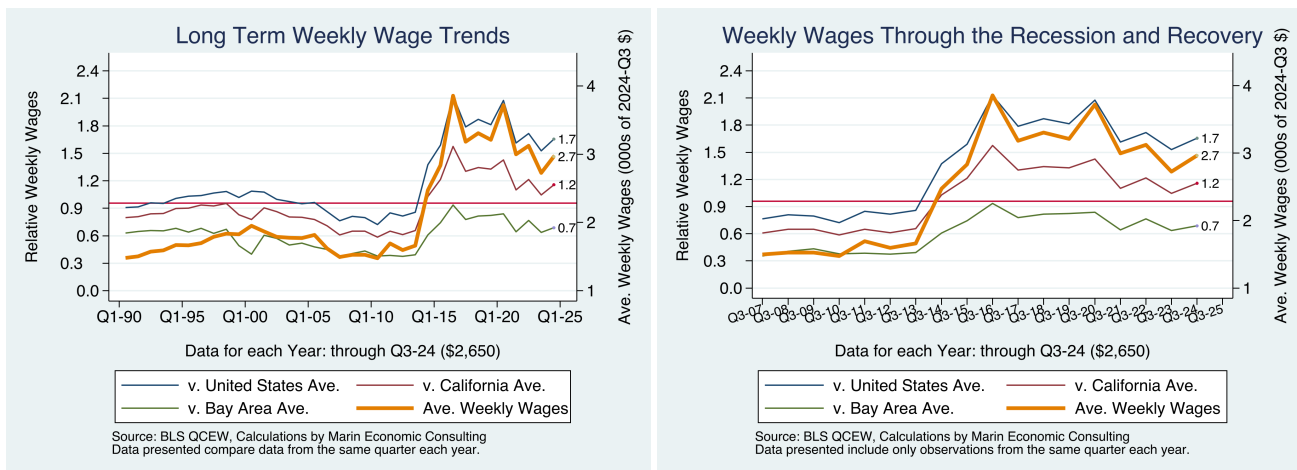


Figure 3 - 5: 1023: Financial activities

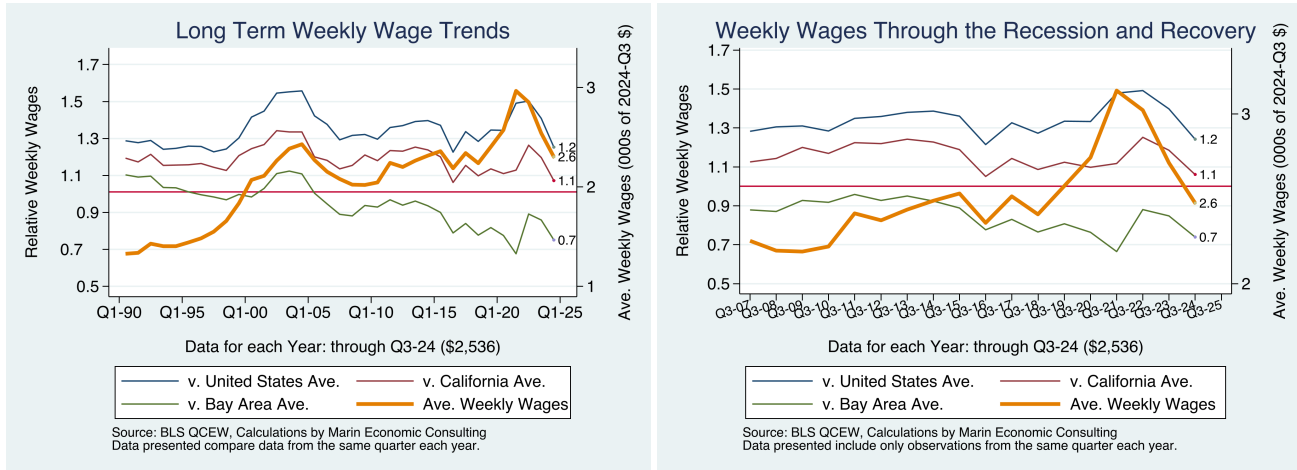


Figure 3 - 6: 1023: Financial activities

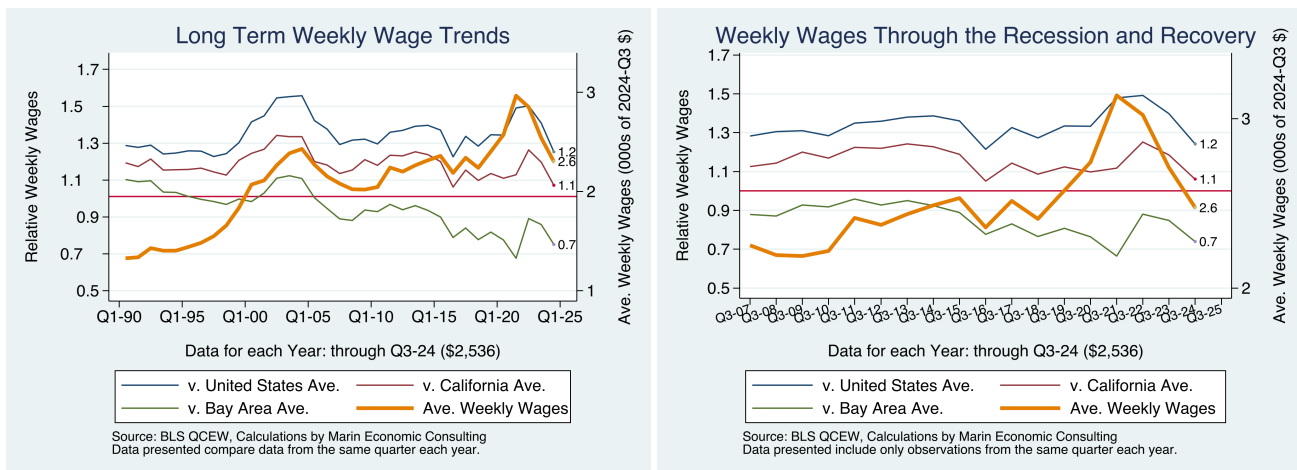


Figure 3 - 7: 1024: Professional and business services

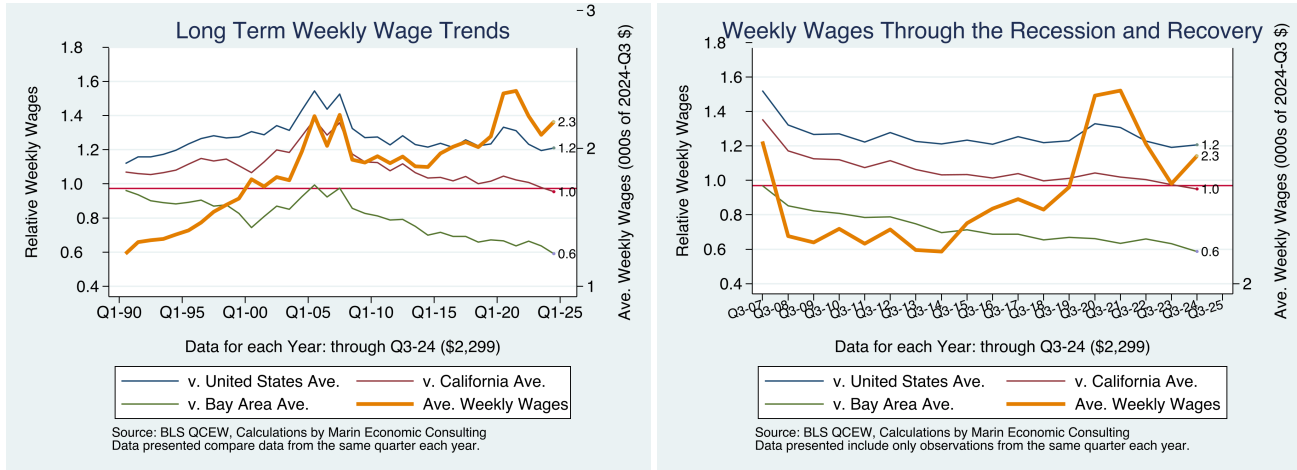


Figure 3 - 8: 1024: Professional and business services

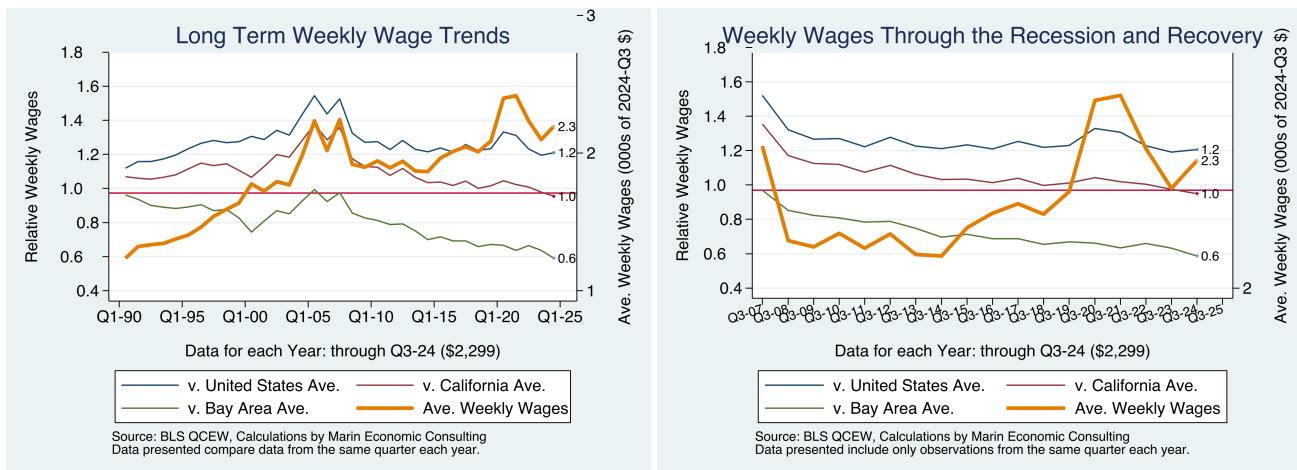


Figure 3 - 9: 1028: Public administration

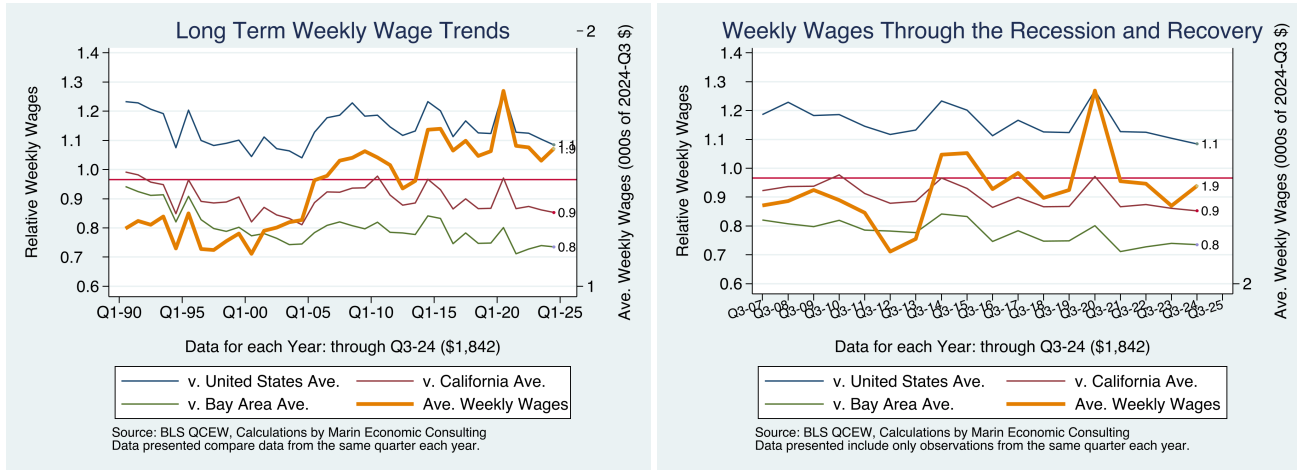
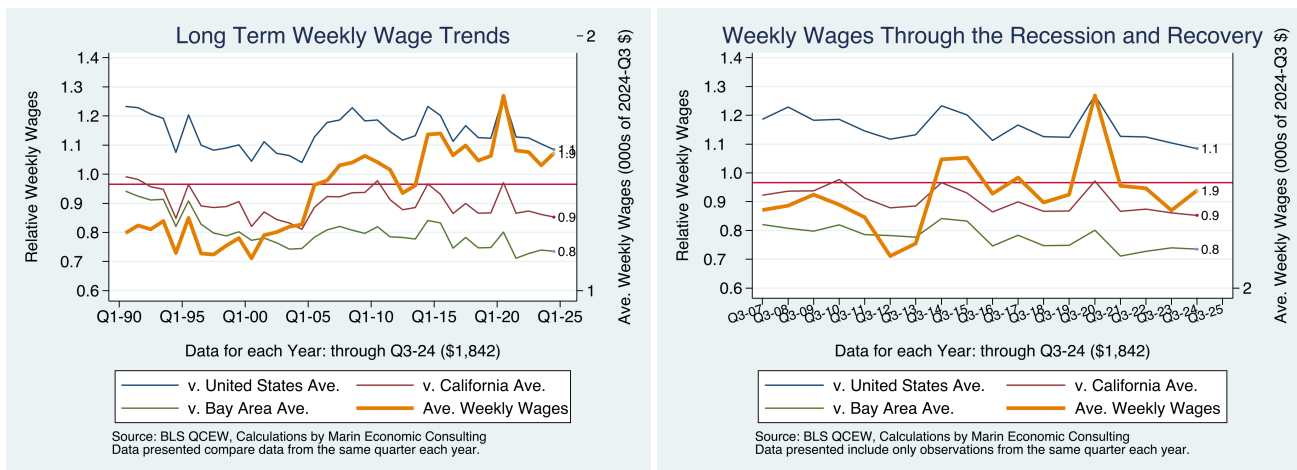


Figure 3 - 10: 1028: Public administration



## 4. Descriptions and References

The contents of this report illustrate the evolution of Marin County wage patterns over time. This report presents:

**Wages:** Average weekly wages for the industry in the region. They are inflation adjusted to current dollars using: Consumer Price Index for All Urban Consumers: All Items, from the FRED Database maintained by the St. Louis Federal Reserve Bank.

The data underlying this report are from the Bureau of Labor Statistics: Quarterly Census of Employment and Wages (QCEW). These data are available on a quarterly basis, generally with a 5 month lag from the end of the quarter to the release of the data.

**QCEW:** The Quarterly Census of Employment and Wages (QCEW) program publishes a quarterly count of employment and wages reported by employers covering 98 percent of U.S. jobs, available at the county, MSA, state and national levels by industry. <http://www.bls.gov/cew/home.htm>

**Time Period:** The data extend from Q1-1990 through Q3 -2024

**Seasonality:** There is a significant seasonal component to many industries. The QCEW data are not seasonally adjusted. Rather than seasonally adjusting the data, most comparisons in this report are between the same quarter in different years. The data presented are therefore the actual employment levels and wages (inflation adjusted) compared across years.

A particular focus of this report is on the post-Great Recession recovery. This is accomplished by comparing the most recent quarter of data to the same quarter in 2007, the last non-recessionary year for most of California and the United States.

Notes:

**Notes:** There are occasions where the data displayed seem to reflect implausible increases in either employment or wages. These changes are as reported in the QCEW data. For a closer look at these changes, please contact: [Jon@MarinEconomicConsulting.com](mailto:Jon@MarinEconomicConsulting.com)